



# As the Wood Turns

## A Newsletter of the Peaks Woodturners

### January Meeting Highlights

Don Barnes called the meeting to order. The minutes from the December meeting were approved as presented.

He gave the treasurer's report in the temporary absence of the treasurer. Income since the last meeting included: \$430 in membership dues, \$95 from members choosing to receive the AAW magazine in hard copy, and \$740 in sales including the Coconino Center for the Arts and the library. There is an outstanding sale in the amount of \$224 that is pending. He bought an expiring club gift certificate from Craft Supplies and an expiring club gift card and reimbursed the club \$237.30. Expenses included \$77.04 to Don Baker in reimbursement for the website and \$697 to AAW for memberships. This leaves a current balance of \$4,958.03. The treasurer's report was approved.

In old business, Bob Fain reported that he had contacted Robin at the Coconino Center for the Arts about possibly demonstrating both Saturday and Sunday of the craft show and sale next year. She seemed interested but said she would have to work with the director on the schedule. She'll get back to Bob.

Mike Dries said he approached Warner's Nursery about possibly selling his little cactus "pots." They suggested selling them on consignment with a 60/40 split with 60 percent going to them. The club agreed that was not something worth pursuing.

Jeanette Baker

Volume 6, Issue 2

February 2013

#### Board of Directors

- *President: Don Barnes*
- *Vice President: Bill Dooley*
- *Secretary: Jeanette Baker*
- *Treasurer: Rebecca Crawford*
- *Program Coordinator: Don Baker*



- *Librarian: Steve Van Ooteghem*
- *Videographer: Bob Fain*
- *Outreach: Rebecca Crawford*



#### From the Editor

##### *Creating a Culture of Safety*

The beginning of a new year is a good time to resolve to ensure that we are safety conscious when we turn. The AAW journal has had two good articles on safety within the last six months: "On the Edge of Disaster, Safety in Woodturning," in the August issue and "Reflections on Safety by a Chapter President," in the December issue.

We distributed bright pink Lathe Safety Cards to all members and I hope that you have them mounted where you can review them each time you turn. (If you've lost it or need another, let me know.) Here is a review of the safety checks:

- Do not turn if tired, upset, sick, or tipsy
- Wear safety glasses and a face mask
- Wear short sleeves, no jewelry, comfortable shoes, tie back hair
- Sharpen tools
- Mount blank securely at both ends

- Check locks on tool rest, banjo, tailstock, etc.
- Remove shavings and clutter, eliminate distractions
- Rotate work by hand before turning on lathe
- Begin at low speed, listen while turning
- Turn lathe off to make adjustments
- Remove tool rest and use dust mask while sanding.

I would add to that list: use a dust mask while turning and a mask that filters out fumes when applying finishes, make sure you have adequate light. Don't daydream or let your mind wander while you're turning, even if you're only roughing a blank or sanding.

We need to remember to go over safety steps at each demonstration and share techniques we use to be safe, not only at the lathe but at the bandsaw and miter saw as well.

If you think of other safety tips, share them with the club. If you don't think of it at a meeting, send an email and I'll include it in the next newsletter.

Turn safely!

Jeanette Baker

#### Inside this Issue

<i>Members</i>	2
<i>Pride &amp; Practice</i>	2
<i>Upcoming Activities</i>	3
<i>January Demonstration</i>	3
<i>Who We Are</i>	4
<i>Pride &amp; Practice, Cont'd</i>	4
<i>Map to Baker's</i>	5
<i>Membership form</i>	5

# Members

Members attending the January meeting were:

- Jeanette Baker
- Don Baker
- Don Barnes
- Lin Kwis
- Steve Van
- Larry Gilbert
- Ernie Kurmes
- Bob Fain
- Karl Doerry

- Terry Davis
- Bill Dooley
- Charles Lail
- Rebecca Crawford
- Mike Dries

- New (returning) member
- David Ursin

Guests:

- Brian

New members and guests are always welcome. Annual membership dues are \$30. Family membership is \$30 for the first member and \$10 for each additional member.

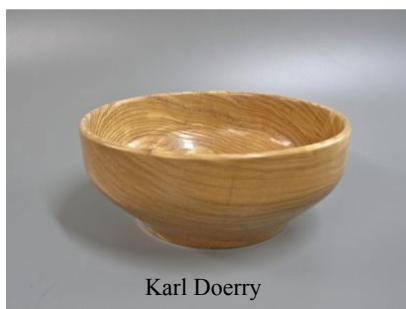
# Pride & Practice



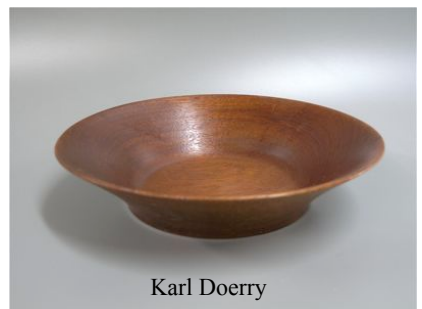
Larry Gilbert



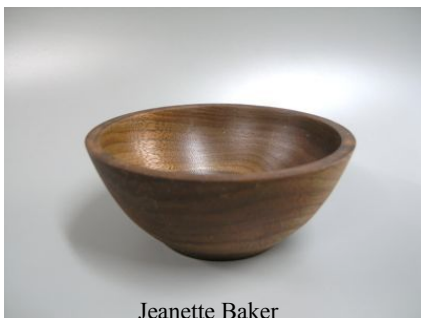
Lin Kwis



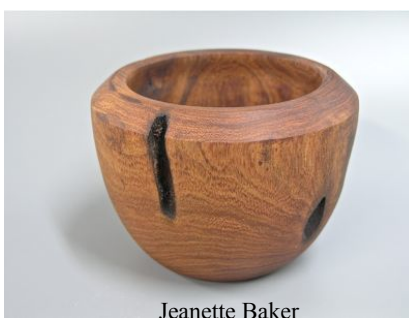
Karl Doerry



Karl Doerry



Jeanette Baker



Jeanette Baker



Steve Van

Continued on page 4

## January Demonstration - Don Baker uses the Carter Hollow Roller



### Upcoming Demonstrations/Activities

Feb. 12	Steve Van	Beaded ball ornament	•	June 11	TBD
Feb. 22-24		Desert Roundup, Mesa, AZ	•	July	TBD Summer Potluck
Mar. TBD	Bob Fain	Making a Longworth Chuck	•	Aug. 13	Carl Smith Natural Edge Bowl
	Charles Lail		•	31 (Sat.)	Coconino County Fair
Apr. 13 (Sat.)	Paul Porter	Hollowing in Action	•	Sept. 10	TBD
May 14	Bill Dooley	Hand Thread Chasing	•	Oct. 8	John Giovale Wood Preparation and more TBD

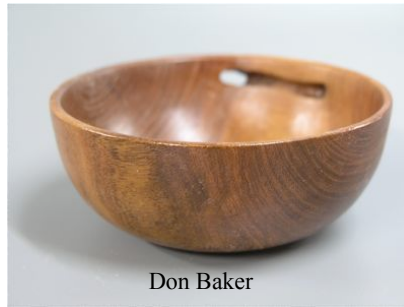


*The Peaks Woodturners is a chapter of the American Association of Woodturners. The purposes of the Peaks Woodturners are to (1) provide a meeting place for local wood turners, (2) share ideas and techniques regarding woodturning, (3) trade woods, (4) exchange ideas about tools, and (5) educate and foster the art of woodturning. Membership is open to anyone interested in woodturning.*

*Meetings take place on the second Tuesday of the month and begin at 6:30 p.m., unless otherwise posted. The location is 333 E. David Dr. in Flagstaff from January through May 2013.*

[www.peakswoodturners.org](http://www.peakswoodturners.org)

## Pride & Practice, *Continued from page 2*

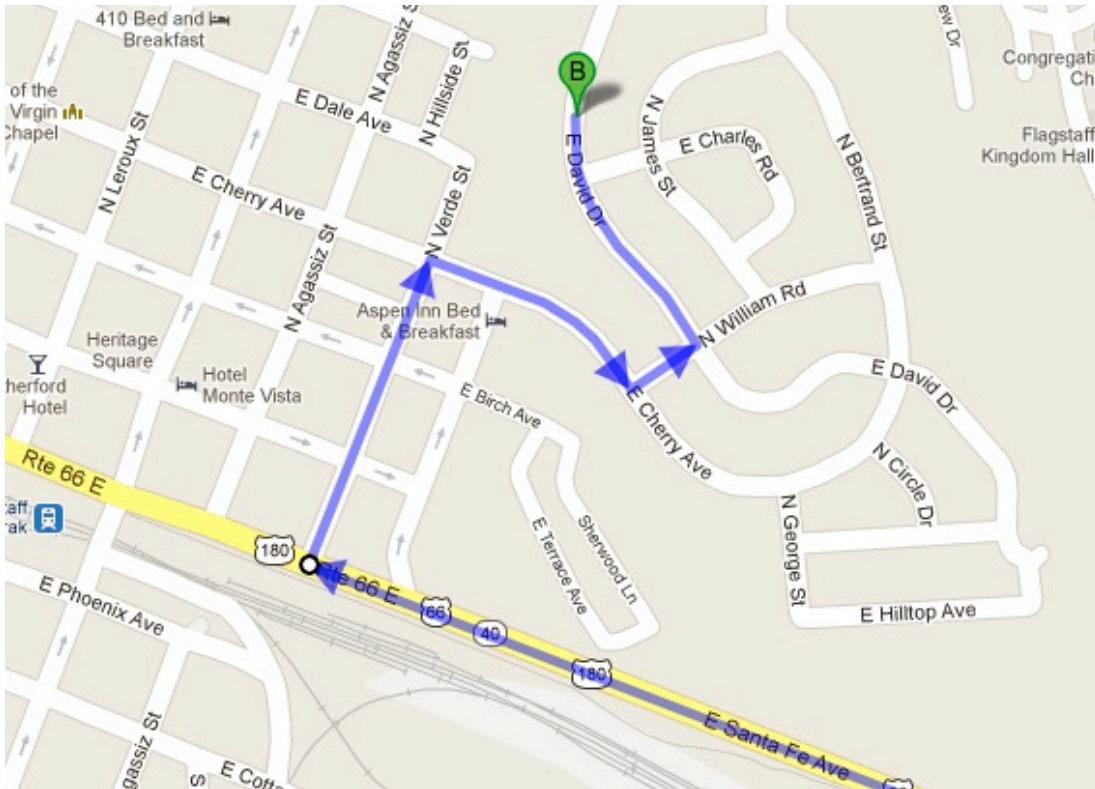


Don Baker



# How to get to Don and Jeanette's:

From Route 66 downtown take N. Verde St. north to E. Cherry Ave. Turn right and go to N. William Rd. at the top of the hill. Turn left on William and go one short block to the cross street, E. David Dr. Turn left on E. David Dr. We are a block and a half down on the left, 333 E. David.



## PEAKS WOODTURNERS MEMBERSHIP FORM

First Name \_\_\_\_\_ Last Name \_\_\_\_\_

Street Address \_\_\_\_\_ City \_\_\_\_\_ Zip \_\_\_\_\_

E-mail \_\_\_\_\_ Confirm e-mail \_\_\_\_\_

Phone \_\_\_\_\_ Membership (\$30/year, individual. Family: \$30 + \$10 each additional member)

Additional member(s): \_\_\_\_\_

E-mail \_\_\_\_\_

Are you an AAW member? \_\_\_\_\_

**Make Checks Payable to: PEAKS WOODTURNERS**

Send completed form and check to:

Peaks Woodturners  
c/o Rebecca Crawford  
5775 Campbell Ave.  
Flagstaff, AZ 86004

Willing to give a demonstration? \_\_\_\_\_

Topic \_\_\_\_\_

Demonstrations you'd like to see: \_\_\_\_\_

\_\_\_\_\_  
\_\_\_\_\_